

FINAL REPORT

to the

SOUTHERN DELAWARE CENTER FOR THE ARTS AND HUMANITIES

**SUSSEX COUNTY ARTS STUDY:  
VIEWS AND OPINIONS OF RESIDENTS**

by

James M. Falk  
University of Delaware  
Sea Grant Marine Advisory Service  
700 Pilottown Rd.  
Lewes, DE 19958

April 2005

University of Delaware Sea Grant College Program  
Lewes, DE 19958

## Table of Contents

INTRODUCTION AND METHODS .....	1
STUDY RESULTS.....	2
Profile of Respondents.....	3
Sussex County Residents Interest in the Arts.....	4
Ability to Travel to Support Art Programs in the County.....	5
Support for the Arts .....	6
CONCLUSIONS .....	22
APPENDIX A: Mail Survey Instrument .....	22
APPENDIX B: Other Activities Enjoyed by Residents.....	22
APPENDIX C: Other Art-Related Interests Mentioned by Residents.....	22
APPENDIX D: Distance Willing to Travel to Participate in Activities .....	22
APPENDIX E: Residents' Limitations on Traveling.....	22
APPENDIX F: How Residents Learn about Art-Related Events .....	22
APPENDIX G: Residents' Preference for Supporting Arts Organizations .....	22
APPENDIX H: Residents' Willingness to Support a Center for the Arts and Humanities.....	22
APPENDIX I: Additional Comments by Residents .....	22

## List of Tables

Table 1.	Response Rates Among Sussex County Census Tract Groups.....	1
Table 2.	Respondents Place of Residence Based on Census Tract Groups .....	1
Table 3.	Respondents Living Permanent or Part-time in Sussex County .....	1
Table 4.	Respondents Born in Sussex County .....	1
Table 5.	Demographic Profile of Sussex County Respondents .....	1
Table 6.	Children, 18 Years and Younger Living in Household .....	1
Table 7.	Types of Activities Enjoyed by Respondents .....	1
Table 8.	Respondents Level of Interest in Various Musical Offerings.....	1
Table 9.	Respondents Level of Interest in Various Forms of Dance.....	1
Table 10.	Respondents Level of Interest in Various Movie/Film Offerings.....	1
Table 11.	Respondents Level of Interest in Various Types of Theatre .....	1
Table 12.	Respondents Level of Interest in Various Types of Art .....	1
Table 13.	Respondents Level of Interest in Art Classes/Lessons .....	1
Table 14.	Distance Respondents Willing to Travel to Attend or Participate in Art-Related Activities.....	12
Table 15.	Respondents Best Time to Travel.....	12
Table 16.	Respondents Travel Limitations (Percent Responding “YES”).....	12
Table 17.	Respondents Sources of Information for Learning about Opportunities and Events in the Arts .....	12
Table 18.	Respondents Making Monetary Contributions to Support Arts Organizations (Percent Responding “YES”) .....	12
Table 19.	Number of Arts Organizations Supported by Respondents.....	12
Table 20.	Respondents Volunteering Their Time to Work for Art Organizations (Percent Responding “YES”).....	12
Table 21.	Respondents Opinions on Supporting Arts Organizations and Programs	12
Table 22.	Respondents Willing to Support the Creation of a Center for the Arts and Humanities.....	12
Table 23.	Respondents Willingness to Support the Establishment of a Center for the Arts and Humanities .....	12
Table 24.	Respondents Interested in Becoming Active in Helping to Create a Center for the Arts and Humanities (Percent Responding “YES”) ..	12

## List of Figures

Figure 1. Sussex County Delaware Census Tracts .....	1
Figure 2. Primary Coastal Tracts.....	1
Figure 3. Secondary Coastal Tracts.....	1
Figure 4. Mid-County Tracts.....	1
Figure 5. Western Tracts .....	1

# Sussex County Arts Study

## Introduction and Methods

The University of Delaware Sea Grant Marine Advisory Service worked with members of the Southern Delaware Center for the Arts and Humanities to conduct a study of Sussex County residents during the Summer, 2004. The overall purpose of the study was to assess residents' opinions and interest in art-related activities. In addition, residents were questioned about their interest in the creation of a center for arts and humanities in the county.

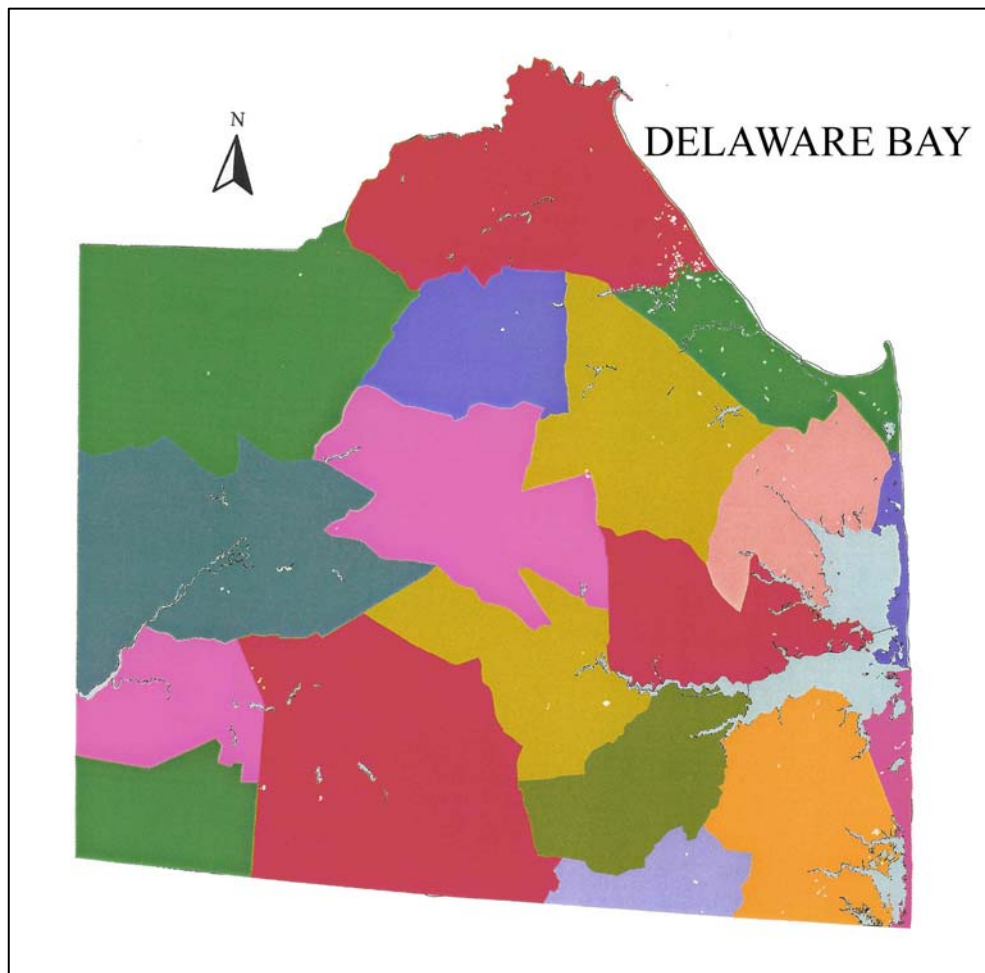


Figure 1. Sussex County Delaware Census Tracts

Data was collected using a mail survey of randomly selected Sussex County residents. Approximately 2,000 residents were surveyed by mail. For sampling purposes, the county was divided into four separate areas comprised of U.S. Census tracts (See Figure 1). The resident populations of these four groups were determined using 2000 Census Data and appropriate sample sizes were selected from each group: The four identified groups and the samples selected included: Primary Coastal (n=650), Secondary Coastal (n=650), Mid-County (n=350), and Western (n=350). Larger sample sizes were selected in the primary and secondary coastal tracts groups, since these areas have experienced greater growth rates than the other groups.

The Primary Coastal tracts (Figure 2) included those census tracts along the Atlantic Ocean and Delaware Bay coasts (there were three tracts included in the 2000 census). These areas include the beach resort towns of Lewes, Rehoboth Beach, Dewey Beach, Bethany Beach and Fenwick Island and the barrier island areas in between, much of it consisting of state park land.

The Secondary Coastal tracts (Figure 3) included the areas just west of the Primary Coastal tracts (five census tracts included), yet these areas exhibit many of the same characteristics as the primary coastal tracts including inland bays' frontage, second home ownership, and population growth trends higher than the county average.

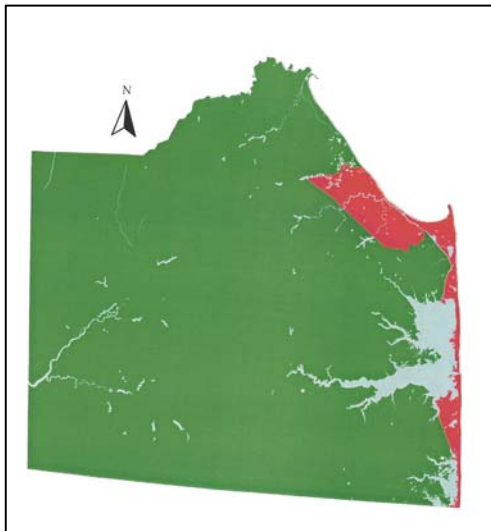


Figure 2. Primary Coastal Tracts

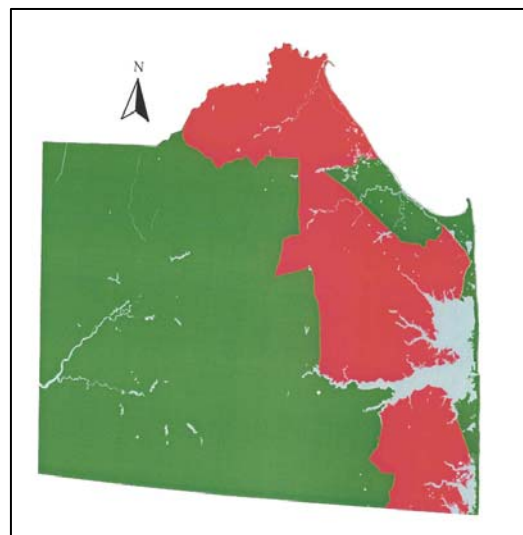


Figure 3. Secondary Coastal tracts

The Mid-County tracts (Figure 4) essentially comprised the central corridor of the county, generally including the towns along Route 113 from Milford in the north to Selbyville in the south. There were five census tracts included within this group.

The Western tracts (Figure 5) were the largest of the four areas and included the north-south corridor along Route 13 and the extensive surrounding rural areas. There were five census tracts within this group. The major towns of Greenwood, Bridgeville, Seaford, Laurel and Delmar are included in these tracts.

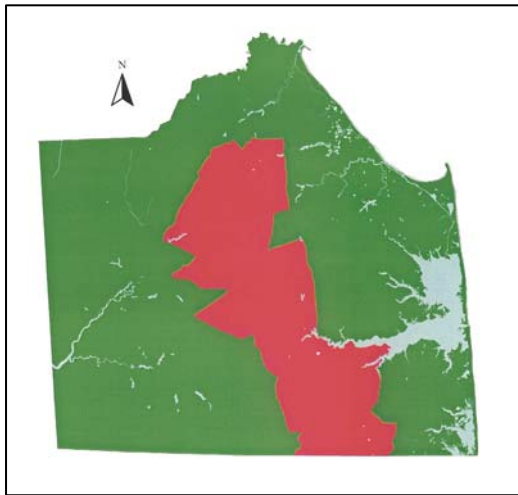


Figure 4. Mid-County Tracts

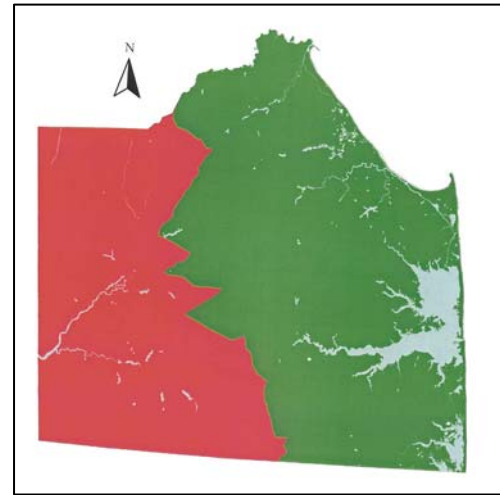


Figure 5. Western Tracts

The first wave of 2,000 surveys was mailed in July 2004, a follow-up postcard reminder and second complete mailing were mailed at various intervals later in August to those who did not respond to the initial mailing. One hundred and ninety of the mailings were returned undeliverable by the U.S. Postal Service (e.g. insufficient/improper address, resident moved left and no forwarding address, etc). Five hundred and four surveys were returned with useful information, representing an overall response rate of 30% after non-deliverables were excluded. Twenty-three percent of the inland residents (Mid-County and Western) responded to the survey (149 of 656) after undeliverable mailings were excluded, and 31% of the coastal residents (Primary Coastal and Secondary Coastal) responded (355 of 1154) after undeliverables. For a more complete review of responses by census tract group see Table 1.

<b>Table 1. Response Rates Among Sussex County Census Tract Groups</b>					
	<b>TOTAL</b>	<b>PRIMARY COASTAL</b>	<b>SECONDARY COASTAL</b>	<b>MID-COUNTY</b>	<b>WESTERN</b>
Surveys Mailed	2000	650	650	350	350
Surveys Undeliverable	190	106	40	23	21
Effective Sample	1810	544	610	327	329
Completed Returns	504	188	167	69	80
Percent Response	30%	35%	27%	21%	24%

To analyze and compare the results between coastal and inland residents, the data from the four census tract groups were combined into two distinct segments. The Primary Coastal and Secondary Coastal census tract respondents were combined and designated as **coastal residents** and the Mid-County and Western tract respondents were combined and designated as **inland residents**. This classification provided the best geographical approximation of respondents living in coastal versus non-coastal areas.

Statistical comparisons were made between the two subsets of residents (coastal and inland) to assess whether they differed significantly (i.e. whether differences observed for the samples can be safely generalized to the populations they represent). The level of significance is represented by a value between 0 and +1. The closer the number is to .000, the greater the probability that differences found in the sample are not due to chance and thus can be inferred to the entire population. Following statistical norms, differences significant at the .05 level or less between coastal and inland residents are noted in the tables.

## Study Results

### Profile of Respondents

Overall, the majority of respondents to the art study were from the eastern side of Sussex County. Approximately 70% of the respondents reside in the eastern one-half of the county. Only 30% of the respondents reside in mid-county and western census tracts (Table 2).

<b>Table 2. Respondents Place of Residence Based on Census Tract Groups</b>			
<b>Primary Coastal (n=188)</b>	<b>Secondary Coastal (n=167)</b>	<b>Mid-County (n=69)</b>	<b>Western (n=80)</b>
37%	33%	14%	16%

The overwhelming majority of respondents (87%) were permanent residents of the county. Thirteen percent identified themselves as part-time residents who have permanent residences elsewhere (Table 3).

<b>Table 3. Respondents Living Permanent or Part-time in Sussex County</b>	
<b>Permanent (n=429)</b>	<b>Part-Time (n=66)</b>
87%	13%

Even though a large percentage of respondents now consider themselves permanent residents of Sussex County, a majority were not born in the county. Only about one-quarter (27%) of all respondents indicated that they were born in Sussex County. The other 73% were born in other states, or in the other two Delaware counties. Of particular interest is the fact that 40% of inland residents were born in the county versus only 21% of coastal residents (Table 4).

<b>Table 4. Respondents Born in Sussex County<sup>1</sup></b>			
	<b>All (n=504)</b>	<b>Coastal (n=355)</b>	<b>Inland (n=149)</b>
Percent Born in Sussex County	27	21	40

<sup>1</sup>Significant differences observed between coastal and inland residents at .01.

Coastal residents tended to be older than their counterparts on the western side of the county. More than one-half of coastal residents (56%) were 60 years of age and older, compared with only 37% of inland residents. Twenty-two percent of inland residents were under 40 years of age compared with only 9% of coastal respondents.

Coastal residents also had a greater likelihood of being college graduates than inland residents. Sixty-one percent of coastal residents indicated they had graduated from college versus 29% of inland residents. Average income levels were also greater for coastal residents than inland residents. For example, 42% of coastal residents indicated they were in income levels greater than \$75,000, compared with 20% of inland residents (Table 5).

<b>Table 5. Demographic Profile of Sussex County Respondents (Values are Percent)</b>			
	<b>All</b>	<b>Coastal</b>	<b>Inland</b>
<b>Age<sup>1</sup></b>	<b>(n=498)</b>	<b>(n=350)</b>	<b>(n=148)</b>
Under 20	1	<1	2
20 – 29	3	2	6
30 – 39	8	6	14
40 – 49	15	12	21
50 – 59	23	24	20
60 and Greater	51	56	37
<b>Sex</b>	<b>(n=495)</b>	<b>(n=347)</b>	<b>(n=148)</b>
Male	51	53	46
Female	49	47	54
<b>Education<sup>1</sup></b>	<b>(n=497)</b>	<b>(n=349)</b>	<b>(n=148)</b>
Grade School	2	1	3
Some High School	4	2	10
High School Graduate	21	16	32
Some College	22	20	27
College Graduate	24	27	17
Post Graduate College	27	34	12
<b>Family Income<sup>1</sup></b>	<b>(n=429)</b>	<b>(n=302)</b>	<b>(n=127)</b>
Under \$20,000	9	5	17
\$20,000 - \$29,999	12	9	18
\$30,000 - \$39,999	12	9	17
\$40,000 - \$49,999	11	12	8
\$50,000 - \$74,999	22	23	20
\$75,000 - \$99,999	11	12	9
\$100,000 - \$149,999	13	16	8
\$150,000 and Greater	11	14	3

<sup>1</sup>Significant differences observed between coastal and inland residents at .01.

In addition, when respondents were asked whether they had children, eighteen years of age and younger, living in their household, 23% overall responded that they did. This response varied significantly by geographic region, with only 18% of coastal residents indicating that they had children living with them, versus 34% of inland residents (Table 6).

<b>Table 6. Children, 18 Years and Younger Living in Household<sup>1</sup></b>			
	<b>All (n=491)</b>	<b>Coastal (n=346)</b>	<b>Inland (n=145)</b>
Percent of Children in Household	23	18	34

<sup>1</sup>Significant differences observed between coastal and inland residents at .01.

## Sussex County Residents Interest in the Arts

Overall, when residents were questioned about various activities (musical, theatre, and artistic) that they engaged in, listening to music (90%) was the most often mentioned activity. This was followed by attending movies (69%), attending music concerts/festivals (59%) and attending plays/theatre (50%). Significant differences were observed between the two segments of county respondents for a few of the activities that were listed. For instance, coastal residents indicated that they were more inclined to attend plays (56% versus 35%), attend art shows (39% versus 16%), participate in the arts/theatre (18% versus 8%), and attend music concerts/festivals (61% versus 51%) (Table 7). See Appendix A for other activities mentioned by respondents.

	<b>All (n=496)</b>	<b>Coastal (n=348)</b>	<b>Inland (n=148)</b>
Listen to Music (Radio/CDs)	90	90	89
Attend Movies/Films	69	70	66
Music Concerts/Festivals <sup>2</sup>	59	62	51
Attend Plays/Theatre <sup>1</sup>	50	56	35
Attend Art Shows <sup>1</sup>	32	39	16
Enjoy Dancing (all kinds)	32	33	31
Participate in the Arts/Theatre <sup>1</sup>	15	18	8
Play an Instrument	14	14	13
Engage in other Arts Activities	7	8	5

<sup>1</sup>Significant differences observed between coastal and inland residents at .01.

<sup>2</sup>Significant differences observed between coastal and inland residents at .05.

A series of questions sought to better understand the level of interest that county residents and their families had about a number of art-related offerings. The various offerings were grouped by topic. Each series of questions asked residents to rate on a 1 to 5 scale how they felt about various types of art-related activities. The tables for each topic present residents' views in two ways. First, the mean rating value (based on a 5-point scale, with 1= Not Interested and 5=Extremely Interested) is presented. Next, the percent of "Very Interested" and "Extremely Interested" responses are shown to better reveal how important each musical offering was to the respondents.

When asked about their level of interest in musical offerings, nearly all of the options had greater support from coastal residents than from the inland residents. The only offerings where inland residents' responses were stronger were for country western music (3.04 versus 2.61, mean rating) and religious music (2.88 versus 2.42, mean rating). All of the other musical offerings were supported to a greater degree by the coastal residents and all showed a significant difference except for rock and roll music (Table 8).

	<b>All (n=492)</b>		<b>Coastal (n=345)</b>		<b>Inland (n=145)</b>	
	<b>Mean Rating Value<sup>+</sup></b>	<b>% V.I. &amp; E.I.*</b>	<b>Mean Rating Value<sup>+</sup></b>	<b>% V.I. &amp; E.I.*</b>	<b>Mean Rating Value<sup>+</sup></b>	<b>% V.I. &amp; E.I.*</b>
Big Band <sup>1</sup>	3.09	43	3.26	47	2.69	34
Jazz/Blues Music <sup>1</sup>	2.99	40	3.13	42	2.68	34
Rock & Roll Music	2.78	37	2.84	39	2.63	32
Symphony Concerts <sup>1</sup>	2.84	35	3.07	41	2.29	21
Country Western Music <sup>1</sup>	2.74	32	2.61	28	3.04	42
Religious Music <sup>1</sup>	2.56	28	2.42	23	2.88	39
Solo (Instrumental or Vocal) <sup>1</sup>	2.70	28	2.84	32	2.35	20
Choral Music <sup>2</sup>	2.59	28	2.72	32	2.27	19
Chamber Music Concerts <sup>1</sup>	2.16	17	2.32	30	1.80	16

<sup>+</sup>Ratings based on 5-point scale: 1=Not at all Important; 5=Extremely Important.

\*Represents percent of respondents who responded Very Important and Extremely Important.

<sup>1</sup>Significant differences observed between coastal and inland residents at .01.

<sup>2</sup>Significant differences observed between coastal and inland residents at .05.

Residents throughout the county did not have strong feelings about the various forms of dance that were presented to them. Only about one-quarter of all respondents indicated they were very interested or extremely interested in any of the forms of dance. Inland residents (2.24 mean rating) indicated a stronger interest in square and line dancing than did coastal residents (2.09 mean rating), although the difference was not significant. The only form of dance that exhibited a significant difference was ballet, where coastal residents (2.42 mean rating) had a stronger interest than did inland residents (1.95 mean rating) (Table 9).

	<b>All (n=493)</b>		<b>Coastal (n=345)</b>		<b>Inland (n=148)</b>	
	<b>Mean Rating Value<sup>+</sup></b>	<b>% V.I. &amp; E.I.*</b>	<b>Mean Rating Value<sup>+</sup></b>	<b>% V.I. &amp; E.I.*</b>	<b>Mean Rating Value<sup>+</sup></b>	<b>% V.I. &amp; E.I.*</b>
Ballroom Dancing	3.09	26	2.49	27	2.30	24
Modern Dance	2.99	24	2.50	25	2.27	21
Ballet <sup>1</sup>	2.78	21	2.42	25	1.95	13
Tap Dancing	2.84	15	2.17	16	2.03	13
Square/Line Dancing	2.74	16	2.09	14	2.24	21

<sup>+</sup>Ratings based on 5-point scale: 1=Not at all Important; 5=Extremely Important.

\*Represents percent of respondents who responded Very Important and Extremely Important.

<sup>1</sup>Significant differences observed between coastal and inland residents at .01.

More than one-half of both groups indicated a strong interest in general release movies (56% -- coastal and 54% -- inland). Coastal residents (2.71 mean rating; 32% -- very interested and extremely interested) were more interested in independent/foreign films than inland residents (2.05 mean rating; 16% -- very interested and extremely interested). Coastal residents (2.59 mean rating; 27% -- very interested and extremely interested) were also more interested in attending film festivals than inland residents (2.06 mean rating; 13% -- very interested and extremely interested) (Table 10).

	<b>All (n=490)</b>		<b>Coastal (n=343)</b>		<b>Inland (n=147)</b>	
	<b>Mean Rating Value<sup>+</sup></b>	<b>% V.I. &amp; E.I.*</b>	<b>Mean Rating Value<sup>+</sup></b>	<b>% V.I. &amp; E.I.*</b>	<b>Mean Rating Value<sup>+</sup></b>	<b>% V.I. &amp; E.I.*</b>
General Release Movies	3.54	56	3.55	56	3.51	54
Independent/Foreign Films <sup>1</sup>	2.51	27	2.71	32	2.05	16
Film Festivals <sup>1</sup>	2.43	23	2.59	27	2.06	13

<sup>+</sup>Ratings based on 5-point scale: 1=Not at all Important; 5=Extremely Important.

\*Represents percent of respondents who responded Very Important and Extremely Important.

<sup>1</sup>Significant differences observed between coastal and inland residents at .01.

Residents of both county geographic areas had interest in the theatre, with comedies being the preferred type by both groups. Coastal residents, however, felt stronger about musicals (3.65 mean rating versus 3.05 mean rating) and dramas (3.54 mean rating versus 3.08 mean rating) than did inland residents (Table 11).

	<b>All (n=493)</b>		<b>Coastal (n=346)</b>		<b>Inland (n=147)</b>	
	<b>Mean Rating Value<sup>+</sup></b>	<b>% V.I. &amp; E.I.*</b>	<b>Mean Rating Value<sup>+</sup></b>	<b>% V.I. &amp; E.I.*</b>	<b>Mean Rating Value<sup>+</sup></b>	<b>% V.I. &amp; E.I.*</b>
Comedies	3.59	60	3.66	62	3.41	57
Musicals <sup>1</sup>	3.47	57	3.65	62	3.05	44
Dramas <sup>1</sup>	3.40	54	3.54	57	3.08	46
Children's Theatre	2.24	20	2.24	19	2.24	22

<sup>+</sup>Ratings based on 5-point scale: 1=Not at all Important; 5=Extremely Important.

\*Represents percent of respondents who responded Very Important and Extremely Important.

<sup>1</sup>Significant differences observed between coastal and inland residents at .01.

Coastal residents had a stronger interest in art exhibits than inland residents. Significant differences were observed between the groups for fine art painting exhibits (3.38 mean rating versus 2.60 mean rating), sculpture exhibits (2.89 mean rating versus 2.31 mean rating), and pottery and ceramic exhibits (2.88 mean rating versus 2.43 mean rating) (Table 12).

	<b>All (n=493)</b>		<b>Coastal (n=347)</b>		<b>Inland (n=146)</b>	
	<b>Mean Rating Value<sup>+</sup></b>	<b>% V.I. &amp; E.I.*</b>	<b>Mean Rating Value<sup>+</sup></b>	<b>% V.I. &amp; E.I.*</b>	<b>Mean Rating Value<sup>+</sup></b>	<b>% V.I. &amp; E.I.*</b>
Fine Art Painting Exhibits <sup>1</sup>	3.15	45	3.38	51	2.60	28
Sculpture Exhibits <sup>1</sup>	2.72	32	2.89	36	2.31	19
Pottery and Ceramic Exhibits <sup>1</sup>	2.74	31	2.88	34	2.43	22
Children's Art Exhibits	2.27	17	2.25	16	2.34	19

<sup>+</sup>Ratings based on 5-point scale: 1=Not at all Important; 5=Extremely Important.

\*Represents percent of respondents who responded Very Important and Extremely Important.

<sup>1</sup>Significant differences observed between coastal and inland residents at .01.

Similar responses were observed between the two groups when asked to indicate which types of art classes or lessons they had an interest in. Only responses for classes in fine arts appreciation and history showed a significant difference between coastal (2.37 mean rating) and inland (1.91 mean rating) residents (Table 13). See Appendix B for a listing of other art-related interests mentioned by respondents.

	<b>All (n=488)</b>		<b>Coastal (n=341)</b>		<b>Inland (n=147)</b>	
	<b>Mean Rating Value<sup>+</sup></b>	<b>% V.I. &amp; E.I.<sup>*</sup></b>	<b>Mean Rating Value<sup>+</sup></b>	<b>% V.I. &amp; E.I.</b>	<b>Mean Rating Value<sup>+</sup></b>	<b>% V.I. &amp; E.I.</b>
Photography Classes	2.76	35	2.75	35	2.78	35
Painting Classes	2.42	25	2.46	26	2.33	24
Fine Arts Appreciation/ History Classes <sup>1</sup>	2.23	21	2.37	24	1.91	14
Pottery and Ceramic Lessons	2.31	19	2.35	19	2.24	19
Instrument Lessons	2.01	17	2.01	17	1.99	17
Children's Art Lessons	1.91	16	1.84	15	2.05	19
Acting Classes	1.93	15	1.91	15	1.97	16
Sculpture Lessons	1.95	13	1.99	13	1.87	12

<sup>+</sup>Ratings based on 5-point scale: 1=Not at all Important; 5=Extremely Important.

<sup>\*</sup>Represents percent of respondents who responded Very Important and Extremely Important.

<sup>1</sup>Significant differences observed between coastal and inland residents at .01.

## Ability to Travel to Support Art Programs in the County

County residents were asked to indicate whether they would be willing to travel certain distances in the county to participate in arts-related programs and activities. No differences were observed between the two groups when responses were tallied. Overall, about one-quarter (26%) of all respondents indicated that travel distance was not a concern. Another 14% noted that they would be willing to travel more than 20 miles to participate in programs. Twenty-nine percent indicated that they would only travel up to ten miles, or were not willing to travel at all. The largest percentage of respondents (32%) indicated a willingness to travel between 10 and 20 miles to attend or participate in art-related programs (Table 14). See Appendix C for other comments about travel distance mentioned by respondents.

	<b>All (n=494)</b>	<b>Coastal (n=346)</b>	<b>Inland (n=148)</b>
Not willing to travel	11	10	13
Willing to travel up to 10 miles	18	21	11
Willing to travel 10-20 miles	32	29	37
Willing to travel more than 20 miles	14	13	15
Travel distance is not a concern	26	26	24
Other	1	1	1

It was also important to understand the time of day that residents were willing to travel. No differences were noted between the groups and 72% indicated that the time of day was not a concern. Twenty percent of all respondents noted that they would only travel during daylight hours (Table 15).

	<b>All (n=475)</b>	<b>Coastal (n=335)</b>	<b>Inland (n=140)</b>
Daylight hours only	20	21	19
Evening hours only	8	5	13
Time of day, not a concern	72	74	68

Road conditions and physical abilities of respondents did not appear to be major concerns limiting respondents' willingness to travel. About one-quarter of all respondents indicated that road conditions (e.g. number of lanes, lighting, traffic, etc) could limit their travel to art programs. Safety concerns and vision problems were mentioned by 17% of respondents (Table 16). See Appendix D for comments on other travel limitations mentioned by respondents.

	<b>All (n=386)</b>	<b>Coastal (n=244)</b>	<b>Inland (n=142)</b>
Road Conditions (# lanes, lighting, traffic)	24	26	20
Safety Concerns	17	18	15
Vision Problems	17	19	12
Trip Route too complicated	8	8	8
Other	10	10	9

A question also sought to find out how residents learned about various opportunities and events in the arts. Overall, the majority of both groups of residents learn about opportunities from local community newspapers (86%). However, coastal residents (90%) were even more inclined to state this was their top-rated source of information than inland residents (76%). Other popular sources of information used by all respondents were friends, families and co-workers (61%, overall) and local radio stations (56% overall). Inland residents (58%) were more inclined than coastal residents (46%) to mention local TV stations as being a primary source of information. Although not rated very high overall, two sources of information were more popular for coastal residents than for inland residents – National Public Radio (22% -- coastal; 11% -- inland) and membership in organizations (21% -- coastal; 12% -- inland) (Table 17). See Appendix E for other sources of information used by respondents to learn about art-related activities and events.

<b>Table 17. Respondents Sources of Information for Learning about Opportunities and Events in the Arts</b>			
	<b>All (n=496)</b>	<b>Coastal (n=349)</b>	<b>Inland (n=147)</b>
Local Community Newspapers <sup>1</sup>	86	90	76
Friends, Family, or Co-workers	61	61	59
Local Radio Stations	56	53	63
Local TV Stations <sup>2</sup>	50	46	58
Flyers (Direct Mail)	37	36	38
Statewide/Out of Town Newspapers	28	30	23
Public TV	24	25	22
Internet/E-mail	19	18	22
National Public Radio (NPR) <sup>1</sup>	19	22	11
Membership in Organization <sup>2</sup>	18	21	12
<i>Artline</i> (Division of Arts Publication) <sup>2</sup>	4	6	1
Other	2	2	2

<sup>1</sup>Significant differences observed between coastal and inland residents at .01.

<sup>2</sup>Significant differences observed between coastal and inland residents at .05

## Support for the Arts

When residents were asked whether they made monetary contributions to support the arts, significant differences were evident between coastal and inland residents. More than twice as many coastal residents (38%) indicated they supported the arts than did inland residents (16%) (Table 18).

<b>All (n=489)</b>	<b>Coastal (n=342)</b>	<b>Inland (n=147)</b>
32	38	16

<sup>1</sup>Significant differences observed between coastal and inland residents at .01.

Of those residents who support the arts, coastal residents were also more inclined to support more organizations than inland residents. Eighty-three percent of coastal residents supported two or more organizations compared to 69% of inland residents (Table 19).

	<b>All (n=157)</b>	<b>Coastal (n=131)</b>	<b>Inland (n=26)</b>
One	20	18	31
Two – Five	76	79	65
Six – Ten	3	3	0
More than Ten	1	1	4

Although only a small number of residents overall indicated that they volunteered their time to work for art-related organizations, coastal residents (11%) were more likely to say they volunteered their time than did inland residents (4%) (Table 20).

<b>All (n=477)</b>	<b>Coastal (n=336)</b>	<b>Inland (n=141)</b>
9	11	4

<sup>1</sup>Significant differences observed between coastal and inland residents at .05.

When residents were asked how they would like to see arts organizations and programs supported, there was little variation between the coastal and inland groups. Overall, they both agreed that ticket sales (92%) and donations from businesses (90%) should be the major ways to support the arts. There was also strong support for government (74%) to provide assistance. Two additional methods of supporting the arts also received considerable favor, and significant differences were noted between the two groups – donations from individuals and families (85% -- coastal; 71% -- inland) and membership dues (78% -- coastal; 65% -- inland) (Table 21). See Appendix F for other options mentioned by respondents for supporting the arts.

	<b>All (n=466)</b>	<b>Coastal (n=322)</b>	<b>Inland (n=144)</b>
Ticket Sales	92	92	91
Donations from Businesses	90	90	88
Donations from Individuals/Families <sup>1</sup>	81	85	71
Government Grants	74	76	71
Membership Dues <sup>1</sup>	74	78	65
Dedicated Tax Levies	22	22	23
Other	2	3	1

<sup>1</sup>Significant differences observed between coastal and inland residents at .01.

More than one-half of the responding coastal residents (52%) indicated that they would be willing to support the creation of a center for the arts and humanities in the county, compared to only about one-third of inland residents (35%). About the same percent of each group (39%, overall) were unsure about supporting the creation of a center (Table 22).

	<b>All (n=487)</b>	<b>Coastal (n=344)</b>	<b>Inland (n=143)</b>
Yes	47	52	35
No	15	11	25
Unsure	39	38	41

<sup>1</sup>Significant differences observed between coastal and inland residents at .01.

Coastal residents were more willing than inland residents to provide annual donations for operating expenses (33% versus 12%) and support a capital campaign for construction (19% versus 6%) of a center for the arts and humanities. A significant percentage of both groups (47% -- coastal; 36% -- inland) expressed an interest in supporting a center, but were unsure of how they would support it (Table 23). See Appendix G for other comments mentioned by respondents to support a center for the arts and humanities.

	<b>All (n=384)</b>	<b>Coastal (n=264)</b>	<b>Inland (n=120)</b>
Annual Donations for Operating Expenses <sup>1</sup>	26	33	12
Capital Campaign for Construction <sup>1</sup>	15	19	6
Estate Gifts or Bequests	4	5	3
Other Types of Gifts/Contributions	5	5	3
Interested, but unsure how to support <sup>2</sup>	44	47	36

<sup>1</sup>Significant differences observed between coastal and inland residents at .01

<sup>2</sup>Significant differences observed between coastal and inland residents at .05

Nearly one-fifth of the responding coastal residents (18%) indicated a willingness to become actively involved in helping to create a center for the arts and humanities in Sussex County. Another 11% of inland residents indicated a willingness to help (Table 24).

<b>All (n=457)</b>	<b>Coastal (n=317)</b>	<b>Inland (n=140)</b>
16	18	11

<sup>1</sup>Significant differences observed between coastal and inland residents at .05.

## Conclusions

Sussex County (Eastern Sussex County in particular) has seen many types of arts and cultural activities continue to grow (e.g. jazz and blues festivals, film festival, and arts festivals) over the years. Many of these activities and events bring, not only arts/culture to the local residents, but also add to the growth of tourism throughout the county. There appears to be a major commitment from many communities (with both paid employees and volunteers) to continue to bring these opportunities to both local residents and visitors. As a result of many of these art and cultural offerings, a small, but dedicated group of individuals, are committed to creating a Center for the Arts and Humanities in Southern Delaware. This is an ambitious task, but one that would provide an opportunity for exposing many more people to the arts and humanities.

This survey was conducted in order to gauge how current residents feel about the arts; their interest and involvement in the arts, and whether they would support the creation of a Center for the Arts and Humanities.

As one might expect, there was considerably more interest from residents living on the eastern side of the county than on the western side. There is also more interest from individuals with higher education levels and higher incomes; again what one would suspect. Although residents were not asked their employment status, it is conceivable that a number of the respondents, especially in Eastern Sussex County, were retirees (57% of coastal residents were over the age of 60, compared to 37% of inland residents).

As this study reported and from previous studies conducted on Sussex County residents, it is well-known that a majority of retired residents re-locate to the county from other locations outside of Delaware (or from Northern Delaware communities). Many of these people re-locate from major cities where the opportunities to engage in the arts were plentiful. This fact may be a key ingredient in why there is a major push to create an arts and humanities center in Southern Delaware.

This study does not provide all of the answers to the question of whether there is adequate support for the development of a center (e.g. funding, infrastructure, political support, etc.) but it does provide a baseline of information by which others can progress forward. By understanding Sussex County residents' views and opinions, future activities can move forward with the knowledge that there is indeed a base of citizens who would support such a center.

**Appendix A**  
**Mail Survey Instrument**



**This questionnaire is designed to obtain your opinions about issues related to the arts and humanities. Please answer the questions and return the survey in the postage-paid envelope provided.**

1. Are you a permanent or part-time resident of Sussex County?  
 Permanent resident       Part-time resident



Where is your permanent residence?  
 City \_\_\_\_\_ State \_\_\_\_\_

2. If you were not born in Sussex County, where did you live prior to establishing a residence in the county? City \_\_\_\_\_ State \_\_\_\_\_
3. What activities do you enjoy participating in on a regular basis? **(check all that apply)**  
 Do you attend:  Movies/Films  Art Shows  Plays/Theatre  Music Concerts/Festivals  
 Do you:  Listen to Music (CDs/Radio)  Play an Instrument  Enjoy Dancing (all kinds)  
 Participate in the Arts, Theatre, etc.  
 Other Related Activities (specify) \_\_\_\_\_

4. Listed below are some activities which help to define what we mean by the arts. Please indicate the level of interest **you and your family** have in each activity by circling the number that comes closest to how you feel. **(1 = Not Interested; 2 = Slightly Interested; 3 = Moderately Interested; 4 = Very Interested; 5 = Extremely Interested)**

Rate your <u>level of interest</u> in the following <b>Musical Offerings</b> :					
Chamber music concerts .....	1	2	3	4	5
Rock & Roll music .....	1	2	3	4	5
Symphony concerts .....	1	2	3	4	5
Solo instrumentalists or vocalists .....	1	2	3	4	5
Choral music .....	1	2	3	4	5
Religious, inspirational music .....	1	2	3	4	5
Jazz, Blues music .....	1	2	3	4	5
Big Band music .....	1	2	3	4	5
Country Western music .....	1	2	3	4	5

Rate your <u>level of interest</u> in the following <b>Forms of Dance</b> :					
Ballet .....	1	2	3	4	5
Modern Dance .....	1	2	3	4	5
Tap Dancing .....	1	2	3	4	5
Ballroom Dancing .....	1	2	3	4	5
Square/Line Dancing .....	1	2	3	4	5

Please indicate the level of interest **you and your family** have in each activity by circling the number that comes closest to how you feel. (1 = Not Interested; 2 = Slightly Interested; 3 = Moderately Interested; 4 = Very Interested; 5 = Extremely Interested)

Rate your <u>level of interest</u> in the following types of <b>Movies/Films</b> :					
General Release Movies .....	1	2	3	4	5
Independent/Foreign Films .....	1	2	3	4	5
Film Festivals .....	1	2	3	4	5

Rate your <u>level of interest</u> in the following types of <b>Theatre</b> :					
Musicals .....	1	2	3	4	5
Dramas .....	1	2	3	4	5
Comedies .....	1	2	3	4	5
Children's Theatre .....	1	2	3	4	5

Rate your <u>level of interest</u> in the following types of <b>Art</b> :					
Fine Art Painting Exhibits.....	1	2	3	4	5
Pottery and Ceramic Exhibits .....	1	2	3	4	5
Sculpture Exhibits .....	1	2	3	4	5
Children's Art Exhibits .....	1	2	3	4	5

Rate your <u>level of interest</u> in participating in the following <b>Art Classes/Lessons</b> :					
Instrumental Lessons .....	1	2	3	4	5
Painting Classes .....	1	2	3	4	5
Pottery and Ceramics Lessons.....	1	2	3	4	5
Sculpture Lessons .....	1	2	3	4	5
Classes in Fine Arts Appreciation/History .....	1	2	3	4	5
Acting Classes .....	1	2	3	4	5
Photography.....	1	2	3	4	5
Children's Art Lessons .....	1	2	3	4	5

Insert and rate any other art-related activities you and your family have an interest in:					
Other (specify) _____ .....	1	2	3	4	5
Other (specify) _____ .....	1	2	3	4	5

5. How far would you be willing to travel in Sussex County to attend or participate in any of the activities listed above? (**check only one**)

- |   |   |
|---|---|
| <input type="checkbox"/> Not willing to travel                    | <input type="checkbox"/> Willing to travel more than 20 miles one way |
| <input type="checkbox"/> Willing to travel up to 10 miles one way | <input type="checkbox"/> Travel distance is not a concern             |
| <input type="checkbox"/> Willing to travel 10 to 20 miles one way | <input type="checkbox"/> Other (specify) _____                        |

6. Considering your ability to travel, are you willing/able to travel: **(check only one)**

- During daylight hours only
- During evening hours only
- Time of day is not a concern

7. If your travel desires/abilities are limited, what are the reasons?  
**(check all that apply)**

- Road conditions (# of lanes, lighting, traffic etc)
- Safety concerns
- Vision problems
- Trip route too complicated
- Other (please specify) \_\_\_\_\_

8. How do you typically learn about opportunities and events in the arts? **(check all that apply)**

- |   |  |
|---|--|
| <input type="checkbox"/> Local community newspapers                           | <input type="checkbox"/> Statewide or out-of-town newspapers     |
| <input type="checkbox"/> Local radio stations                                 | <input type="checkbox"/> Membership in organizations             |
| <input type="checkbox"/> Local TV stations                                    | <input type="checkbox"/> Internet/Email                          |
| <input type="checkbox"/> National Public Radio (NPR)                          | <input type="checkbox"/> Flyers (direct mail from organizations) |
| <input type="checkbox"/> Public TV  | <input type="checkbox"/> Friends, family, co-workers             |
| <input type="checkbox"/> <i>Artline</i> (DE Division of the Arts Publication) | <input type="checkbox"/> Other (please specify) _____            |

9. Do you currently make monetary contributions to support arts organizations?

- Yes    No



If Yes, how many organizations do you support? **(check only one)**

- 1    2 - 5    6 - 10    More than 10

10. Do you volunteer your time to work for an arts organization?    Yes    No

11. In your opinion, how would you prefer to see local arts organizations and programs supported?  
**(Please respond to each option)**

- |   |                              |                             |
|---|------------------------------|-----------------------------|
| Government grants                       | <input type="checkbox"/> Yes | <input type="checkbox"/> No |
| Donations from businesses               | <input type="checkbox"/> Yes | <input type="checkbox"/> No |
| Donations from individuals and families | <input type="checkbox"/> Yes | <input type="checkbox"/> No |
| Ticket sales                            | <input type="checkbox"/> Yes | <input type="checkbox"/> No |
| Dedicated tax levies                    | <input type="checkbox"/> Yes | <input type="checkbox"/> No |
| Membership dues                         | <input type="checkbox"/> Yes | <input type="checkbox"/> No |
| Other <b>(specify)</b> _____            |                              |                             |

**The next few questions will help us plan for a future center for the arts and humanities in Sussex County.**

12. Would you be willing to support the creation of a center for the arts and humanities in Sussex County?  Yes  No  Unsure



If Yes, how would you be willing to support the establishment of this center?

**(check all that apply)**

- Annual Donation (for operating expenses)
- Capital Campaign (for construction)
- Estate gifts or bequests
- Other types of gifts/contributions (please specify) \_\_\_\_\_
- I am interested, but I am currently unsure about how to support it.

13. Would you like to become actively involved in helping to create an arts and humanities center in the county?  Yes  No



If Yes, how can we contact you? \_\_\_\_\_

**The next few questions are about you and will help us to know more about county residents. We stress that all of your answers will be kept strictly confidential.**

14. What is your age?  Under 20  20-29  30-39  40-49  50-59  60 and over

15. Are you:  Male  Female

16. What is the highest level of education you have completed?

- Grade School
- Some High School
- High School Graduate
- Some College
- College Graduate
- Post Graduate Education

17. Including yourself, how many people in each age group live in your household?

\_\_\_\_ 5 years and under    \_\_\_\_ 6 to 18 years    \_\_\_\_ 19 to 25 years  
\_\_\_\_ 26 to 50 years    \_\_\_\_ 51 to 65 years    \_\_\_\_ Over 65 years

18. Which best describes your total annual family income before taxes?

- Under \$20,000
- \$20,000-29,999
- \$30,000-39,999
- \$40,000-49,999
- \$50,000-74,999
- \$75,000-99,999
- \$100,000-149,999
- \$150,000 or more

Please feel free to provide any additional comments you may have.

---

---

---

***Thank you for your cooperation. Please return the completed survey in the stamped, self-addressed envelope provided.***



**Sea Grant  
College Program**

University of Delaware  
Hugh R. Sharp Campus  
Lewes, Delaware 19958-1298

Ph: 302-645-4235  
Fax: 302-645-4213  
Email: [jfalk@cms.udel.edu](mailto:jfalk@cms.udel.edu)

Summer 2004

Dear Sussex County Resident:

We are conducting a study to determine your interest in the arts in Sussex County. Your name was randomly selected from all residents living in the county. As our population increases and the number of arts organizations in Sussex County grows, and their activities increase, it has become apparent to many that there is a need for a regional or area-wide performing arts and educational center.

To begin the planning for this venture, representatives from numerous culture and arts organizations have formed the Southern Delaware Center for the Arts and Humanities, a non-profit corporation. With technical expertise provided by the University of Delaware Sea Grant Program, the Center is conducting this study to get your opinions and thoughts on this matter. We are asking your help and cooperation as we begin assessing the need for, the interest in, the uses of, and the possible support for a regional center containing theatres, studios, classrooms and display space at a location still to be determined.

The accuracy of the study depends on the number of questionnaires returned. It should only take between 10 and 15 minutes of your time to complete the survey. Once you have answered the questions, please place the questionnaire in the enclosed postage-paid envelope and return it as quickly as possible. Any information you provide will be strictly confidential and your name or individual responses will never be reported in any way.

The results of this study will be made public after it is completed through the media and public meetings of the sponsoring organization – The Southern Delaware Center for the Arts and Humanities. Information from local residents, like you, is vital to ensure your opinions and ideas about this proposed facility and its activities are included in any future planning that is undertaken. We greatly appreciate your help and interest in this study.

Sincerely,

James M. Falk  
Project Coordinator

This project is made possible, in part, by grants from the National Endowment for the Arts and the Delaware Division of the Arts, a state agency committed to promoting and supporting the arts in Delaware.

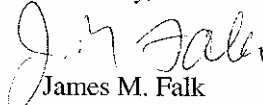
Dear Sussex County Resident:

About a week ago you should have received a questionnaire seeking your opinions about issues related to the arts in Sussex County. At the time this postcard was mailed, we had not yet received your response. Your answers are very important and will be used to represent the opinions of many other residents with views similar to yours.

We would greatly appreciate it if you would take a few minutes to complete the questionnaire and return it in the postage-paid envelope we provided. If you have misplaced the questionnaire, or did not receive it, we will send you another one if we do not hear from you.

Thank you for your time and cooperation.

Sincerely,



James M. Falk  
Project Coordinator

**Note: If you have already completed and returned the questionnaire, please disregard this reminder. Thank you for your prompt response.**

Summer 2004

Dear Sussex County Resident:

About three weeks ago we sent you a questionnaire inquiring about your interest in the arts in Sussex County. If you have already replied, we thank you for your prompt response. If you have not yet completed the questionnaire, would you please take the time to do so now? It should only take between 10 and 15 minutes of your time.

As our population increases and the number of arts organizations in Sussex County grows, and their activities increase, it has become apparent to many that there is a need for a regional or area-wide performing arts and educational center. Information from local residents, like you, is vital to ensure your opinions and ideas about this proposed facility are included in any future planning that is undertaken.

We are writing to you again because if our results are to be as reliable and useful as possible, it is important that each questionnaire be completed and returned. Remember, all responses will be summarized and handled in strict confidentiality.

A copy of the questionnaire and a reply envelope are enclosed in case you did not receive, or have misplaced, the original materials we sent you. Once you have completed the survey, just seal it in the postage-paid reply envelope and drop it in any mailbox.

Your time and cooperation are greatly appreciated.

Sincerely,

James M. Falk  
Project Coordinator

**Appendix B**  
**Other Activities Enjoyed by Residents**

**What activities do you enjoy participating in on a regular basis?  
Question #3**

**Arts, Crafts, and Shows/Exhibits:**

- Crafts (3)
- Photography (3)
- Museums (2)
- Quilting, Sewing, Needlework
- Woodcrafts
- Ring art
- Stained Glass (Tiffany style)
- Painting
- Sculpture
- Would like to take painting classes
- Art classes for all ages
- Special art exhibitions
- Art therapist: do outreach thru Rehoboth Art League with special needs children
- Art Collector
- Practicing visual artist (i.e. painting, drawing, etc)
- Take art classes with SDALL
- Antiques Shows
- History touring

**Music and Drama:**

- Sing in choir (2)
- Sing in church and academy choirs
- Sweet Adelines (Choral singing)
- Husband sings
- Attend Washington, DC National Symphony Orchestra
- Opera in New York once a year
- Support coastal concerts
- Sing in AARP chorus
- Dinner Theatre
- Plays
- Festivals
- Local history interpretation
- Attend storytelling festivals/programs

**Sports and Outdoor Activities:**

- Fishing (10)
- Golf (6)
- Sports (5)
- Boating/Sailing (5)

- Gardening (4)
- Watersports (3)
- Outdoor activities/sports (3)
- Walking (3)
- Baseball (2)
- Tennis (2)
- Softball (2)
- Bowling,
- Horseback riding
- Children's sports
- Swimming
- Canoe and kayak
- Rowing
- Biking
- Hiking
- Camping
- Playing football
- Volleyball (seniors)
- Hunting
- Horse racing (harness)
- Fitness
- Racquetball
- Exercise
- Nautical activities
- Skiing
- Beach
- Zoos
- Parks
- Attend football games
- Spectator sport fan

**Clubs/Organizations:**

- Church (3)
- Car Clubs (Lower Delaware Mustang Club and Wheels That Heal Car Club)
- Service clubs
- Sierra Club member

**Other:**

- Reading (7)
- Travel (3)
- Television (3)
- Poetry Library
- Crossword puzzles
- Playing cards

- Internet
- Cooking
- Home improvement
- Handyman extraordinaire
- Family oriented activities
- Volunteer at church and library
- Score counselor
- Yard Sales
- Lecturing about people
- Classes to help actualize artist, writer, musician, actor in each of us

**Additional Comments:**

- I do participate in fun times at the National Arboretum (Washington, DC) and I'm on the Board of Directors. In Florida, I attended art shows, plays, theater, and music concerts/festivals. I work with bonsai, ikebana, and worked with Marikami museum in Florida.
- My six-year old daughter takes dance lessons and wants to take music lessons too. She'll be attending SDSA in the Selbyville.
- There is not enough opportunity here to participation in the arts, theater, etc. I miss that.

## **Appendix C**

### **Other Art-Related Interests Mentioned by Residents**

**Insert and rate any other art-related activities you and your family  
have an interest in?  
Questions #4**

- Crafts (3)
- Antiques (3)
- Poetry readings (2)
- Jewelry making
- Lapidary/metal smith
- Handwork
- Arts and Crafts shows
- Needlework
- Quilting
- Wood carving (not decoys)
- Folk Art
- Photography
- Cross-stitching
- Wildlife art
- Watercolor
- Writing poetry
- Creative writing
- Creative writing workshops
- Storytelling workshops and performance
- School Theater
- Dinner theatre
- Supper clubs
- Living history interpretation
- Stage plays
- Festivals
- Old films
- Live band concerts
- Multicultural music performances
- Speakers involved in research
- Dance
- Belly Dancing
- Irish step dancing
- Swing/Ballroom dancing classes
- Renovations
- Architecture
- Special needs outreach
- Events that combine arts with humanities programs
- Folk, bluegrass music
- Seeing museum exhibits coming to Sussex County, not just Wilmington

- Lewes sidewalk art show
- Jewelry making
- Carving
- Art
- Fine art crafts
- Music
- Music appreciation
- Seaford concert series
- Opera
- Celtic Music
- Irish dancing
- Lecture series
- Ship Building,
- Children's Art Museum
- Painting
- Stained Glass
- Oil and watercolor
- Social movements, etc. (as long as they are not here to plug something)
- Architect designed buildings
- Drawing
- Dance
- Movies
- Doo wop concerts

## **Appendix D**

### **Distance Willing to Travel to Participate in Activities**

**How far would you be willing to travel in Sussex County to attend or participate in any of the activities listed above?**  
**Questions #5**

- Willing to travel more than 20 miles one way if accommodations are provided
- Willing to travel up to 10 miles one way for class
- Willing to travel 10 to 20 miles one way for weekend
- Travel distance is not a concern for special programs or to attend an event
- Travel distance is not a concern, only the day if the week in the summer
- I would travel further with a group by bus
- Bus trips would be nice
- As long as I can drive, daylight is better than night.
- Already travel two hours to Wilmington!
- We are summer residents - most of the events listed we attend during the winter
- Depends who and what it is; It really depends on the activity.

**Appendix E**  
**Residents' Limitations on Traveling**

**If your travel desires/abilities are limited, what are the reasons?  
Question #7**

**Traffic related:**

- Summer traffic (5)
- Traffic congestion (3)
- High volume of traffic
- Travel time
- Don't like Wilmington traffic
- Traffic
- Don't like to drive
- I avoid highway 1 during summer and weekends
- Times when Route 1 is congested
- Route 1 is too heavily driven
- Something in town in Rehoboth would be appreciated; Route 1 is horrid

**Limited Time/Time of Day:**

- No time, limited time (5)
- Work (5)
- Work during the day (5)
- Job hours (2)
- Busy with business concerns
- Busy schedule
- Parents being too busy
- When we are here, we are busy
- Full-time job
- Single parent
- Work full-time
- Working in daylight hours during the week
- Between work and school we can only attend late afternoon and evening events during the week
- Shift work
- Family or work obligations

**Physical disabilities/Safety concerns:**

- Age (4)
- Too old
- Restricted walking
- Safety and vision, I'm 75 and widowed
- Vision problems, specifically nighttime driving
- I'm 75, hard to drive at night
- Have trouble seeing at night
- Must be in daylight, can not drive at night

- Health
- Can't walk
- At age 82, I feel it prudent not to drive at night
- I am handicapped, must have help walking, etc.

**Weather:**

- Weather conditions (4)
- Ice, snow
- Really bad weather

**Other:**

- Not interested (6)
- No car (3)
- Distance (2)
- Insufficient funds
- Money
- Fuel costs at the moment
- Keeping children occupied during ride
- Kids
- If my parents don't feel like driving me

## **Appendix F**

### **How Residents Learn about Art-Related Events**

**How do you typically learn about opportunities  
and events in the arts?  
Question #8**

- Church (2)
- Seeing it posted somewhere
- Delaware News Journal
- Wave Newspaper
- Baystar Dinner Theater
- Delaware Today Magazine
- Local businesses
- Christian radio stations
- Direct mail flyers aren't received often here, but I also learn from posters, signs, and flyers I pick up

## **Appendix G**

### **Residents' Preference for Supporting Arts Organizations**

**In your opinion, how would you prefer to see local arts organizations and programs supported?**  
**Question #11**

- Fundraisers (2)
- NOT TAXES, No tax money (2)
- Allied Arts Fund
- Community open house events
- Benefit performances
- Small class fees
- Promotional gifts
- Percent of sales from art products
- Special events for a fee
- Summer/fall festival with raffle for prize money or trip; Administrative fees deter some people/families from attending
- Membership dues are ok but keep them affordable
- National Endowment for the Arts
- Ticket sales are ok, but keep prices low so events are not limited to the wealthy (\$5-20 depending on event)
- Fundraisers via art leagues and other groups that would benefit from having this center
- Those that use services, pay for them
- No citizen required to subsidize someone else's non-essential interests

## **Appendix H**

### **Residents' Willingness to Support a Center for the Arts and Humanities**

**Would you be willing to support the creation of a center for the arts and humanities in Sussex County? If yes, how would you be willing to support the establishment of this center?**

**Question #12**

**Volunteering/Work:**

- Volunteer (4)
- Volunteer/fundraising
- Volunteering, expert assistance from past experience
- Time and energy
- Work
- Provide services

**Memberships/Donations:**

- Annual membership as per public TV
- One time cash donation
- Donations to a specific event
- Donation of works for sale or auction
- Willing to donate modest amount due to fixed income (retiree)
- Periodic donating, not necessarily every year

**Other:**

- Free will offering
- Live auction
- Buying tickets to events
- Go to events
- Very committed politically and to civic groups

**Appendix I**  
**Additional Comments by Residents**

- What a terrific idea!
- Delighted to see this initiative! Congratulations! People of Sussex “deserve” the opportunity! Please keep up the good work!
- I’m much more interested in conservation and sea stuff than in art.
- I’m moving here in October 04, I would support the arts.
- Dinner theatre and classical music would be a benefit for the development of young people in Sussex.
- We enjoy the arts, but due to age we do not participate much.
- Glad to have supported this survey. I will be moving out of this county within the next year. This county is lacking arts for the young.
- You should also have programs that low-income, interested people can join.
- Outdoor shows and more symphony visits, but take it slow, one thing at a time. Summer bandstands are good, but nothing much for winter and locals.
- I am an artist.
- I did two programs on educational television in Florida, also gave some lectures, demonstrations, and set up show exhibits. In 2005, we at the National Arboretum will be hosting the world convention, exhibits, show, lectures, demonstrations, and workshops.
- Benefits for people in need should be part of this effort. There is much need in Sussex County.
- I am retired and on disability. My income is limited and I would not be able to afford much financial support. Favorite festival is Brandywine arts festival in Wilmington, DE.
- Great idea! Too many of the local art leagues/organizations hold meetings, etc. during business hours so I am unable to participate. This leads to every group being comprised of all retirees who paint watercolors.
- Great idea with more support here than ever before.

- We strongly support more programs in Sussex County, but please remember that many of the people that will support you are only part-time residents when you schedule programs, etc. Thanks!
- All forms of the arts are commendable.
- My wife and I are 71 and 74 year old seniors, retired and on limited income. We do buy tickets or contribute to arts events and music events we prefer to attend.
- Specific taxes to support the arts are wrong. If you want it, you pay for it.
- Great idea! We miss arts of the Washington DC area.
- Good luck! Great idea!
- I would like to see more done in poetry, such as workshops.
- There is no folk music/singer-songwriter venue in Sussex County.
- Would love to see groups such as "The Gaithers" in Delaware and not have to drive to Philadelphia. If you knew how many buses go from lower Delaware, I imagine you would be surprised.
- There is a definite need for an arts and humanities center in Sussex County.
- I would like to volunteer, but I feel I am not educated enough to help out. I love people and all I really know is the retail business.
- Lower income people enjoy many activities and shows, just the same as higher income people, but they are kept from taking advantage due to cost.
- There seem to be some good new publicized events, the jazz festival for example. My guess is there are many events occurring, but they just are not that visible. Maybe publicity is really the challenge or that our interest level is such that we don't spend time seeking out opportunities in this area.
- None of the questions relate to the humanities although it is called an "arts study". Will there be a humanities questionnaire?
- I don't know if skateboarding and surfing is considered an art, but if it is, then you should create a place where children can learn.

- Milton would be an excellent location for this center- central- up and coming- strong community support.
- It would appear that existing facilities should be used until solid interest in the program exists.
- Really enjoy theater- musicals, plays- have not been pleased with the Cape Henlopen theater- too serious. Enjoy "feel good" entertainment!
- Taught advertising course at Monroe County Technical College in PA. I am also interested in renewing painting courses, as student, not instructor.
- The arts center should be in a safe, lighted area. The Schwartz center in Dover is in a bad neighborhood.
- Great idea!! Thank you for thinking of us in slower lower Delaware. We're growing in population. We live in Ocean View and things such as this within 20-25 miles would be great.
- Please keep this center restricted to artistic use! No boat shows, dog shows, or monster truck shows like the Ocean City Convention Center and the Wicomico Civic Center do!! We desperately need a performance arts venue in this area and that should be the priority! The second priority would be to make that venue available to local performers and instructors on an equitable basis, so that not single group or medium dominates the center.
- The exhibition spaces in Sussex County leave much to be desired.
- The area seems to be very culturally deprived, would be wonderful to have museums, theatre, etc. I am a graduate of the visual arts. I am a single mom and it is difficult to interest my daughter in cultural activities because of the limited opportunities and unfortunately when they come along my income is not enough to attend anything. I would be very interested in working for and supporting this project. The arts and theatre are something no one should be without!
- I so enjoyed the Delaware symphony at the university in Lewes. What happened? Please bring them back for the Summer Concerts!
- The Rehoboth Art League has given many of us a chance to see, learn, and participate.

- I am very much interested in developing a Children's arts program, particularly for special needs children in Sussex County. I welcome any contact that could further my involvement in the development of a center for the arts.
- Funding should be a combination of government funds and private contributions so that ticket prices and memberships don't limit access.
- I think we need more fine arts organizations for summer people; instruction and exhibits and groups to paint and exhibit with.
- Our responses would have been totally different earlier. My wife (76) and me (83) have placed financial and energy restraints on our activities. We are 5½ month residents of Bethany Beach.
- Duplication of functions is killing the arts by diluting resources for small operations that have no reason to exist other than sponsor egos. See Howard County Community College or Wildelock High School in Columbia to see how these needs can be met in existing public spaces. Do not fall prey to creating another drain that absolutely, categorically will have to be subsidized by tax revenues to be even modestly successful.
- Please look at facilitating the establishment of a Waldorph School for children (developed by Rudolph Steiner and superior to Montessori School), emphasizing self-expression and self-esteem over the 3 R's. This curriculum could be brought into the public schools. Waldorph Schools teach all children to be artists first, then to develop the 3 R's ability to follow their interests. The results are amazing! I know some of the kids that have gone through such education programs. It gets more folks more deeply involved in arts, longer in life.
- I am now a widow and very old and unable to enjoy events away from my home. I'm a little too handicapped. When I was young I was a dramatic contralto and sang in many choruses in Delaware and Illinois. Also solos- it was fun!!
- If I had a car and money and could drive, I would do a lot of things. But I don't have either.
- I appreciate the arts. However, family obligations create a large conflict to supporting a program.
- Build it and they will come. (2)